

Enceladus masternode guide for VPS and local wallet

Introduction

This guide is for a single masternode, on a Windows 64bit server (VPS) running headless and will be controlled from the wallet on your local computer (Control wallet). The wallet on the the VPS will be referred to as the Remote wallet.

You will need your server details for progressing through this guide.

First the basic requirements:

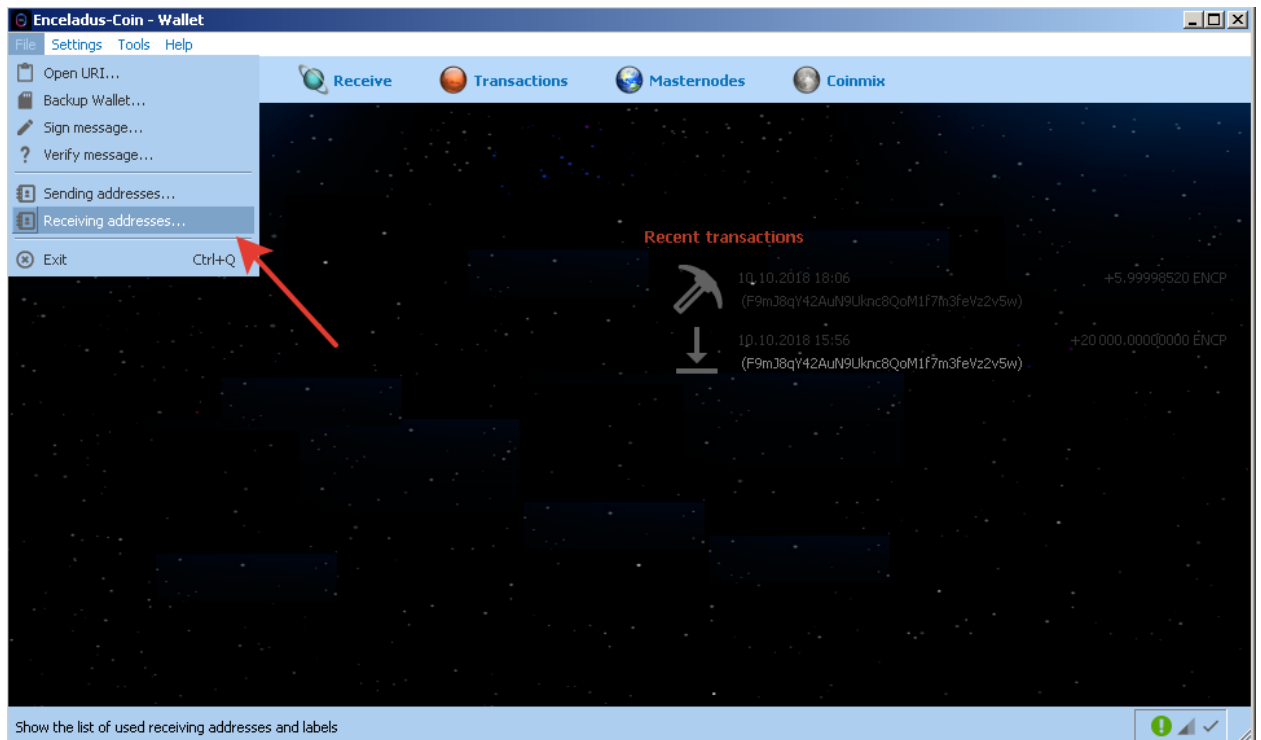
1. 5000 – 50000 ENCP
2. A main computer (Your everyday computer) – This will run the control wallet, hold your collateral 10,000 piv and can be turned on and off without affecting the masternode.
3. Masternode Server (VPS – The computer that will be on 24/7)
4. A unique IP address for your VPS / Remote wallet

(For security reasons, you're are going to need a different IP for each masternode you plan to host)

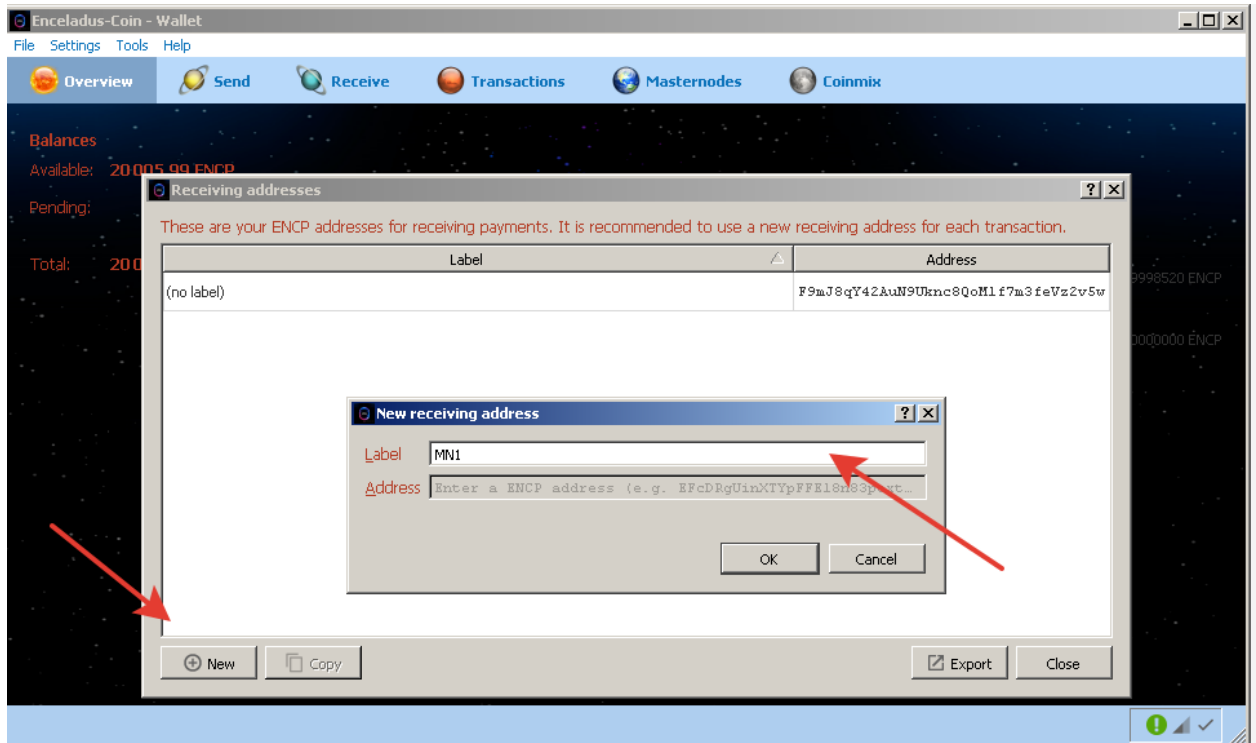
The basic reasoning for these requirements is that, you get to keep your PIV in your local wallet and host your masternode remotely, securely.

Main wallet settings:

Step 1.

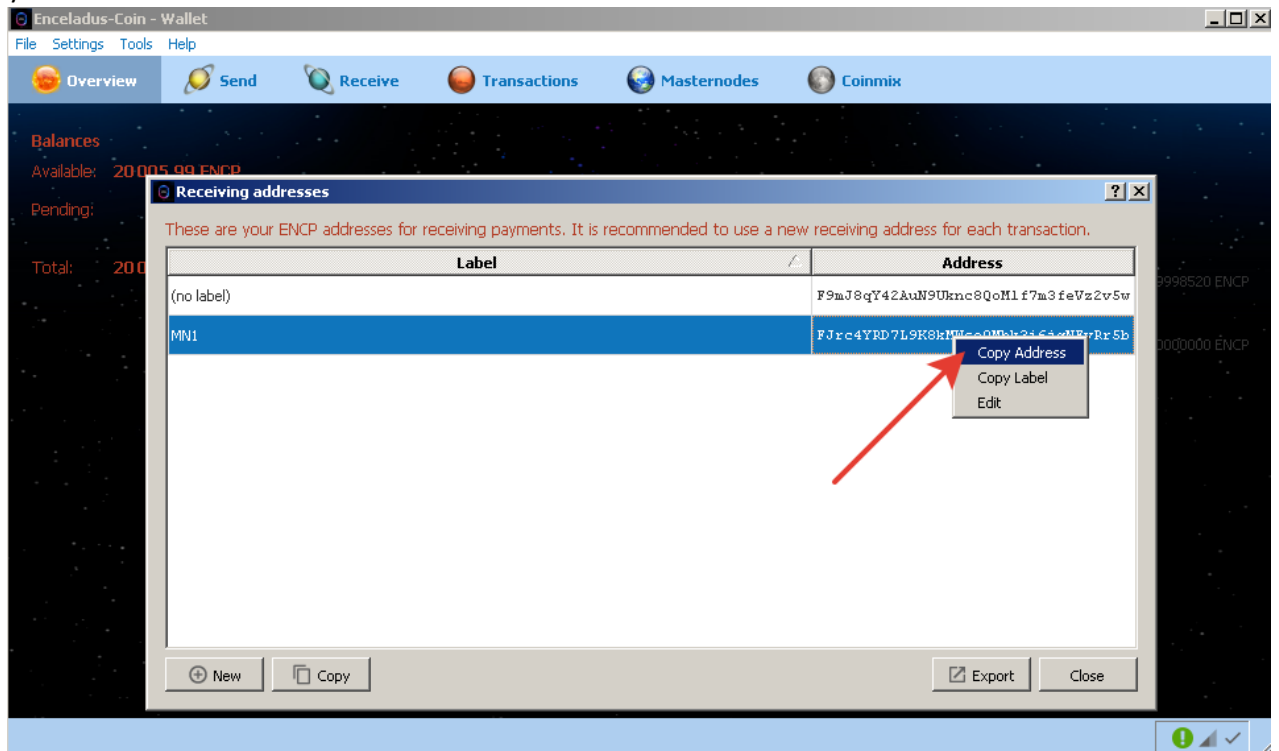


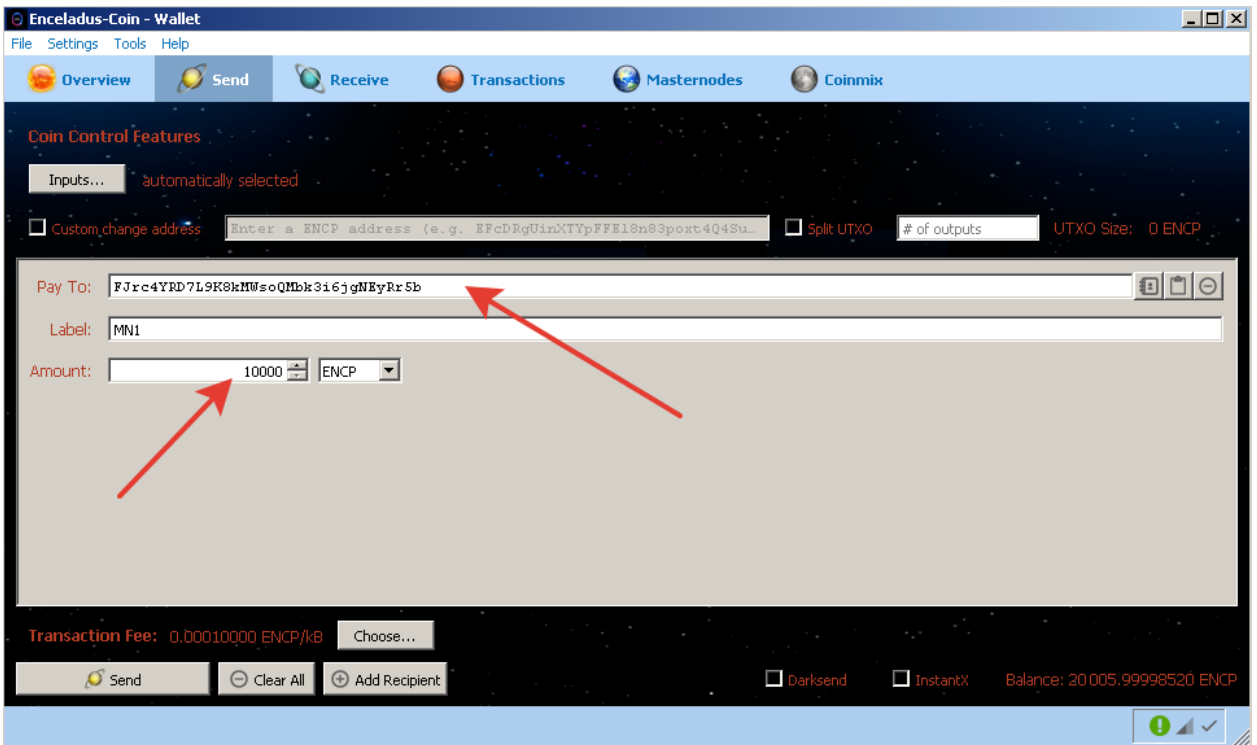
Step 2.



Still in the control wallet, send 5000 – 50000 ENCP to the address you generated in step 2 (Be 100% sure that you entered the address correctly. You can verify this when you paste the address into the “Pay To:” field, the label will autopopulate with the name you chose.)

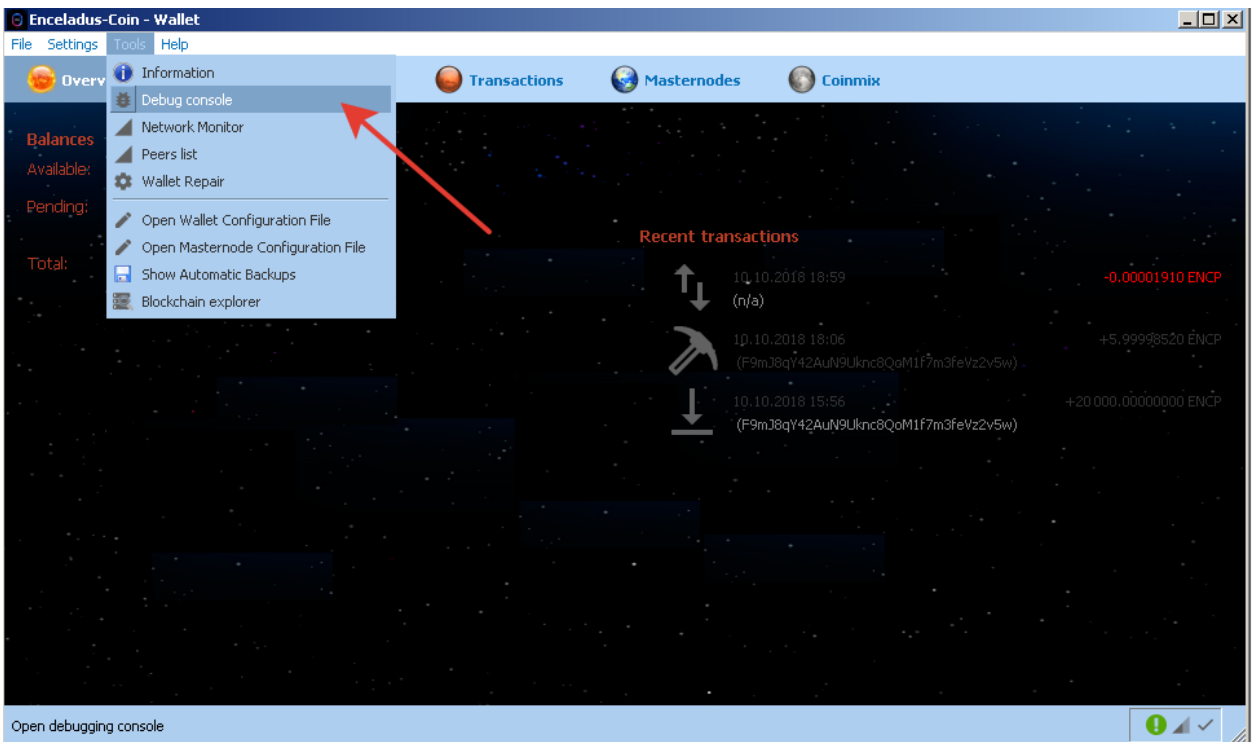
– Be absolutely 100% sure that this is copied correctly. And then check it again. We cannot help you, if you send ENCP to an incorrect address.

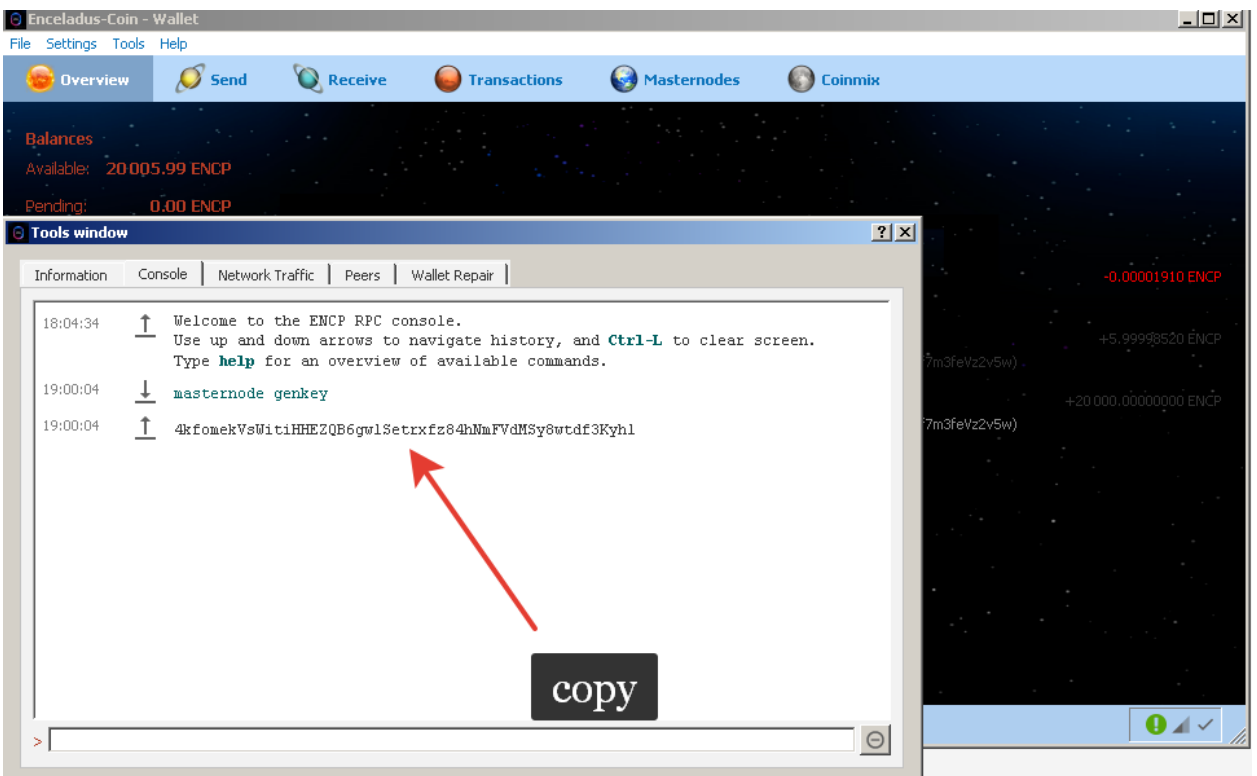
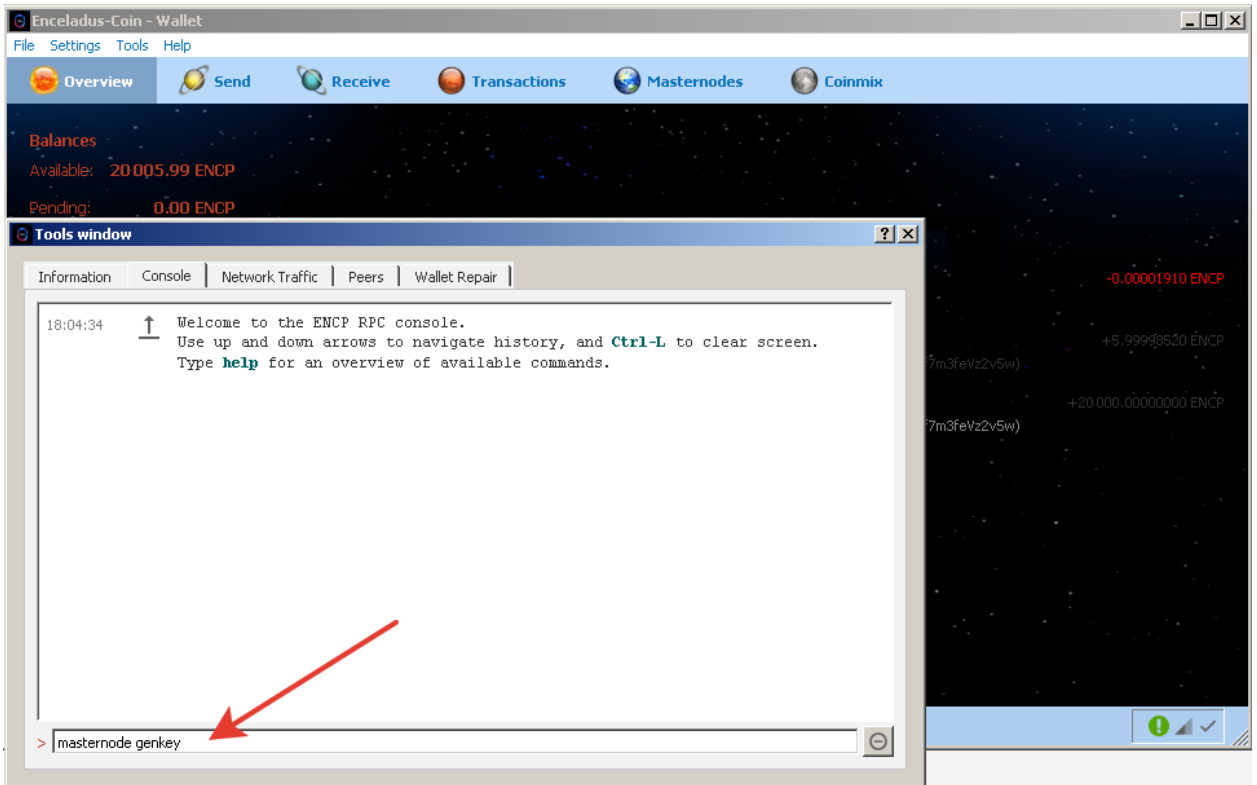




Using the control wallet, enter the debug console (Tools > Debug console) and type the following command:

masternode genkey (This will be the masternode's privkey. We'll use this later...)

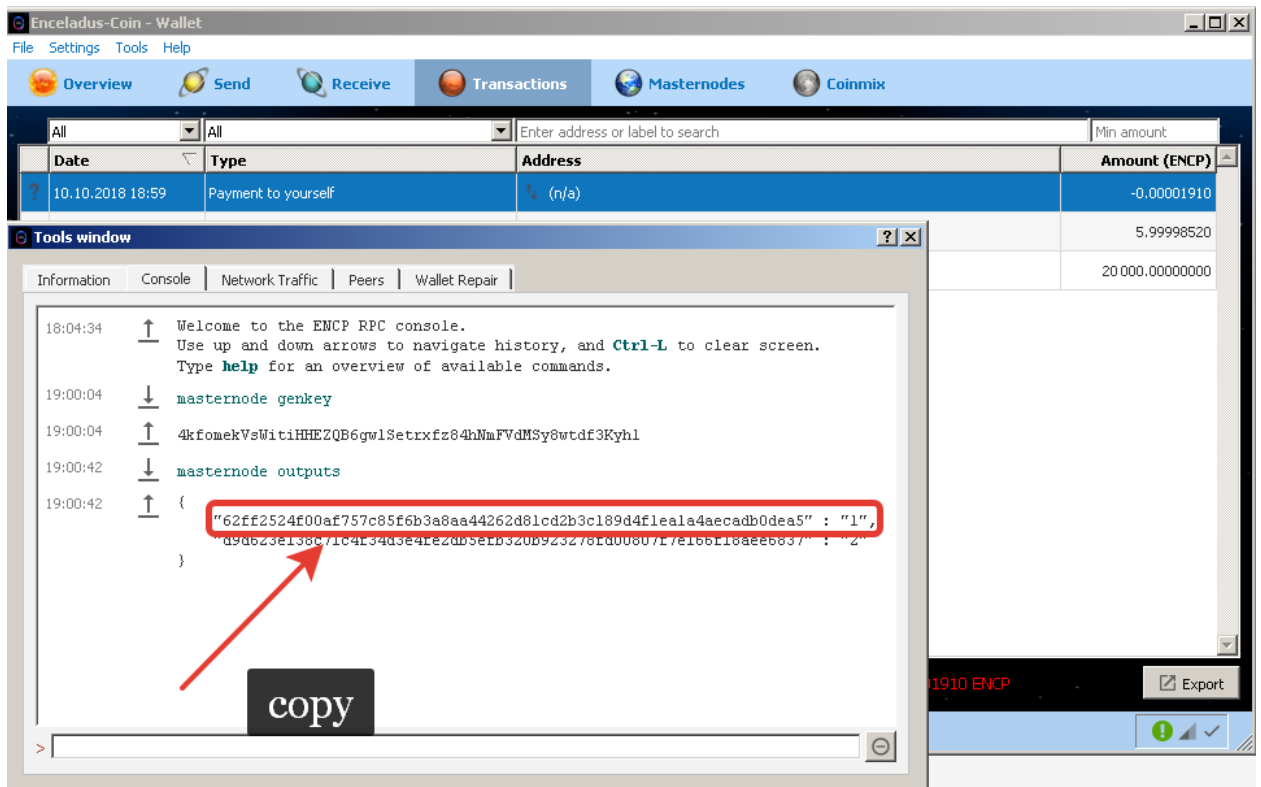




Still in the control wallet, enter the command into the console:

`masternode outputs`

(This gets the proof of transaction of sending ENCP)

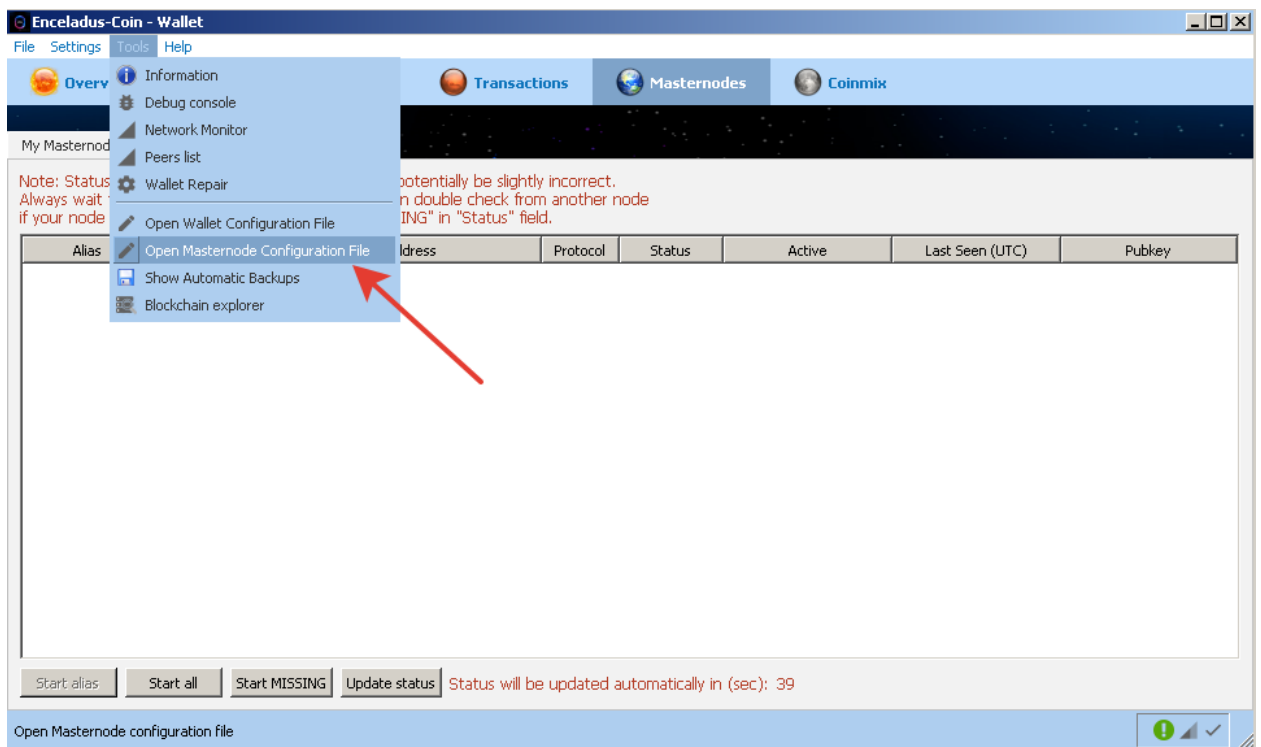


Find masternode.conf and add the following line to it:

**<Name of Masternode(Use the name you entered earlier for simplicity)> <Unique IP address>:51472
<The result of Step 1> <Result of Step 4> <The number after the long line in Step 4>**

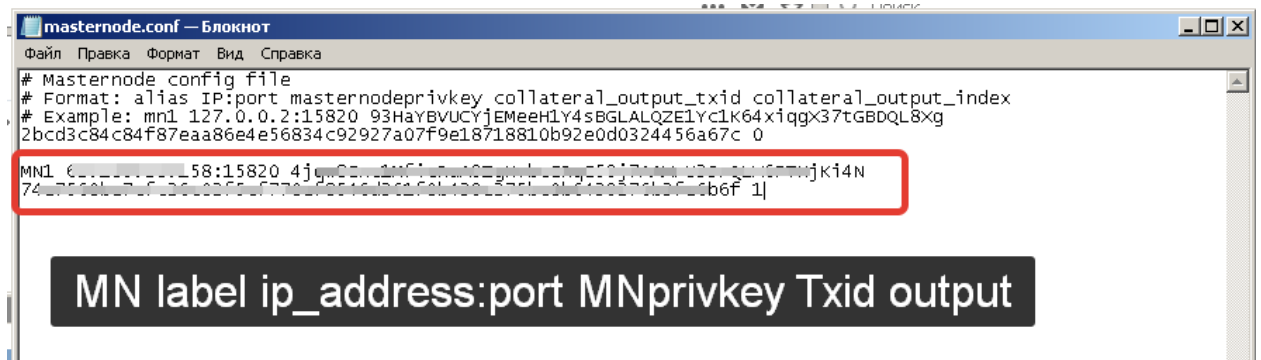
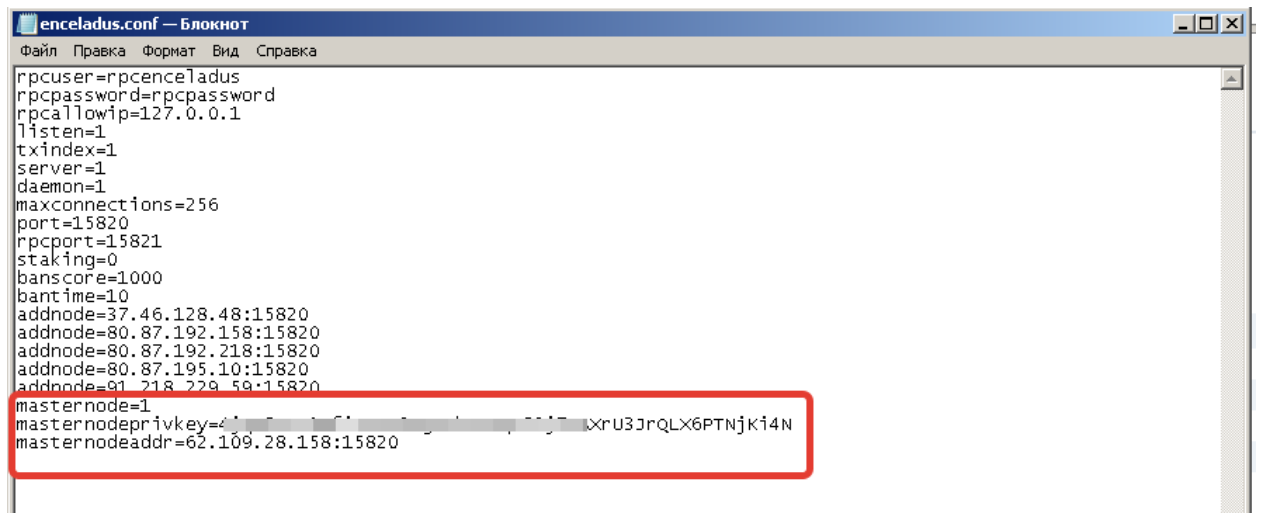
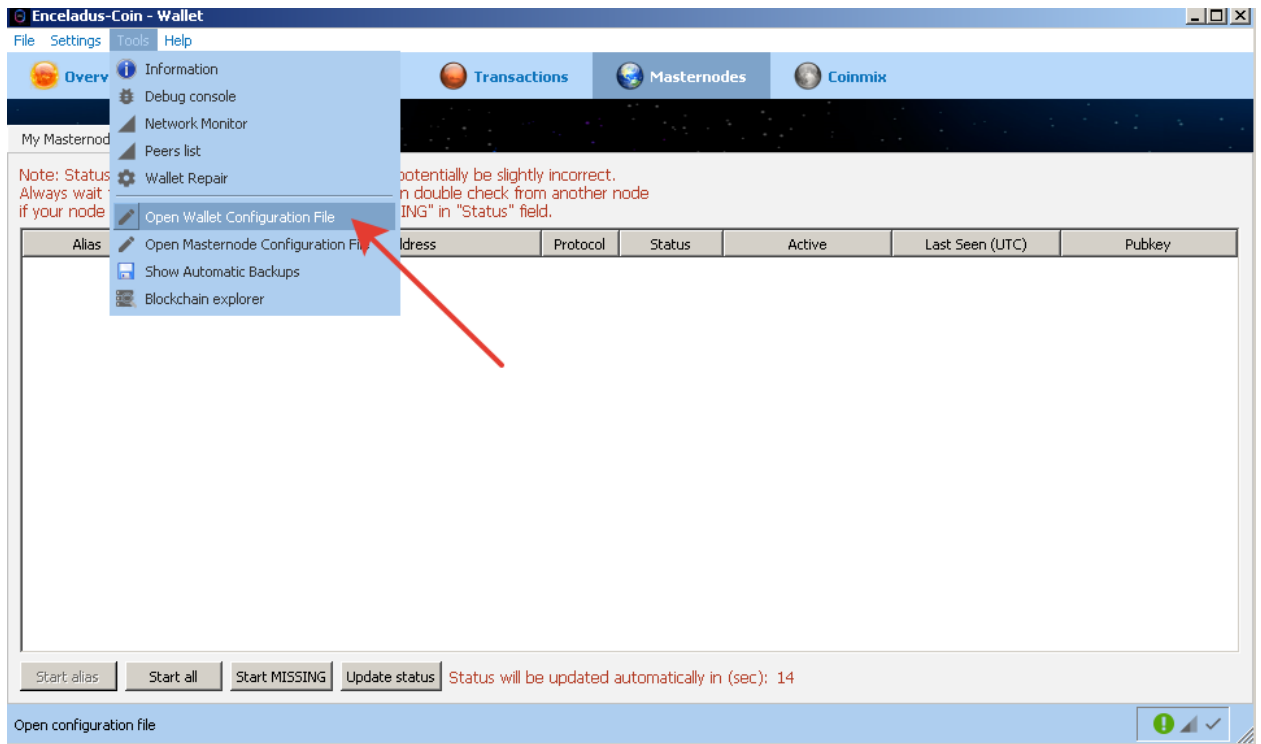
Example: MN1 31.14.135.27:51472 F92Wppkqbr7sr6Si4fdfsfssjapuFzAXwETCrpPJubnrmU6aKzh
c8f4965ea57a68d0e6dd384324dfd28cfbe0c801015b973e7331db8ce018716999 1

Substitute it with your own values and without the "<>"s

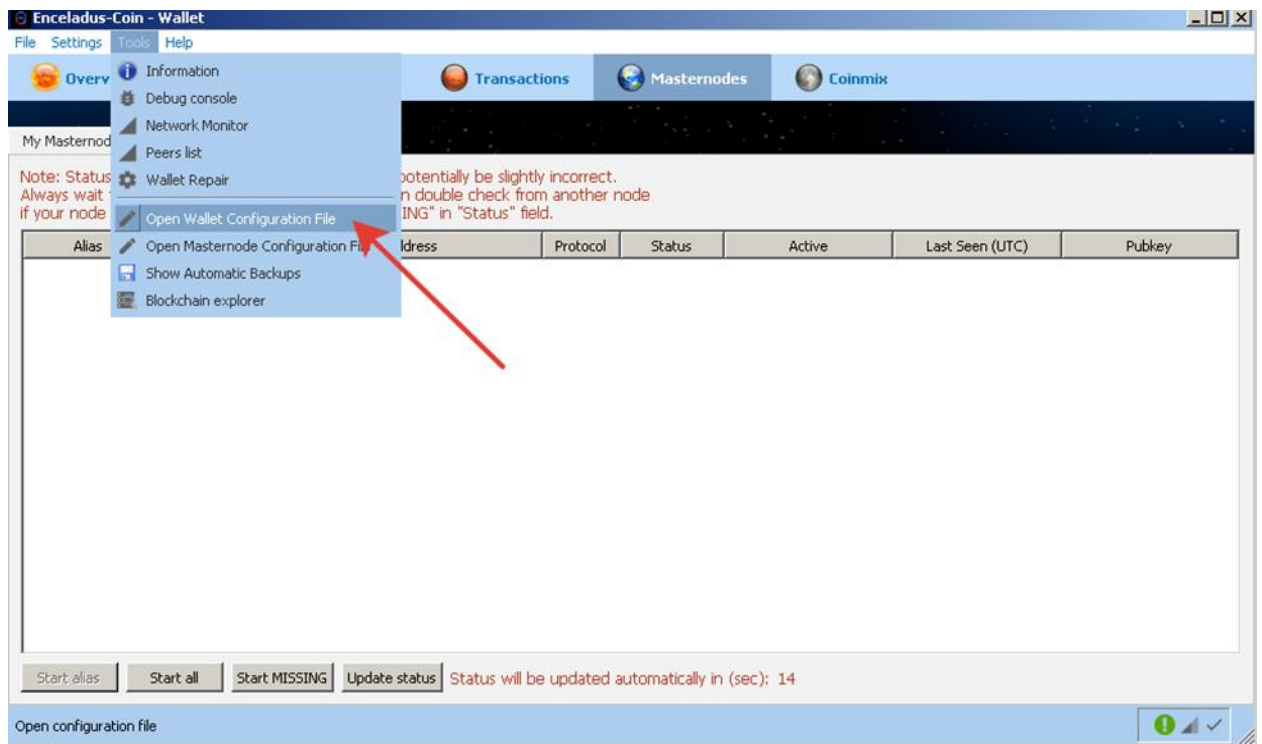


Find enceladus.conf and add the following lines to it:

rpcuser=rpcenceladus
rpcpassword=rpcpassword
rpccallowip=127.0.0.1
listen=1
txindex=1
server=1
daemon=1
maxconnections=256
port=15820
rpcport=15821
staking=0
banscore=1000
bantime=10
addnode=37.46.128.48:15820
addnode=80.87.192.158:15820
addnode=80.87.192.218:15820
addnode=80.87.195.10:15820
addnode=91.218.229.59:15820
masternode=1
masternodeprivkey=YOUR_PRIV_KEY
masternodeaddr=YOUR_VPS_IP:15820



Go to VPS and run Enceladus wallet. (If you will run MN at same PC, skip this point, just use your IP in enceladus.conf and masternode.conf)



in the file enceladus.conf insert this text:

rpcuser=rpcenceladus

rpcpassword=rpcpassword

rpccallowip=127.0.0.1

listen=1

txindex=1

server=1

daemon=1

maxconnections=256

port=15820

rpcport=15821

staking=0

banscore=1000

bantime=10

addnode=37.46.128.48:15820

addnode=80.87.192.158:15820

addnode=80.87.192.218:15820

addnode=80.87.195.10:15820

addnode=91.218.229.59:15820

masternode=1

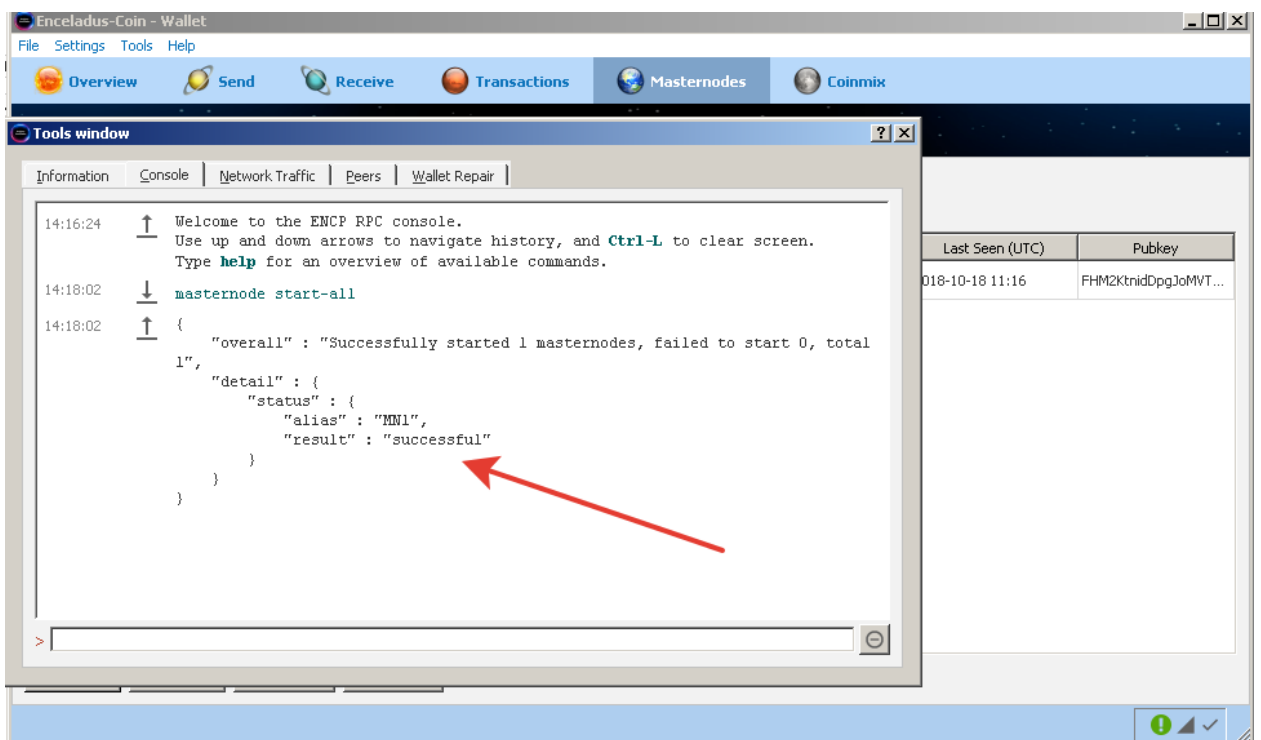
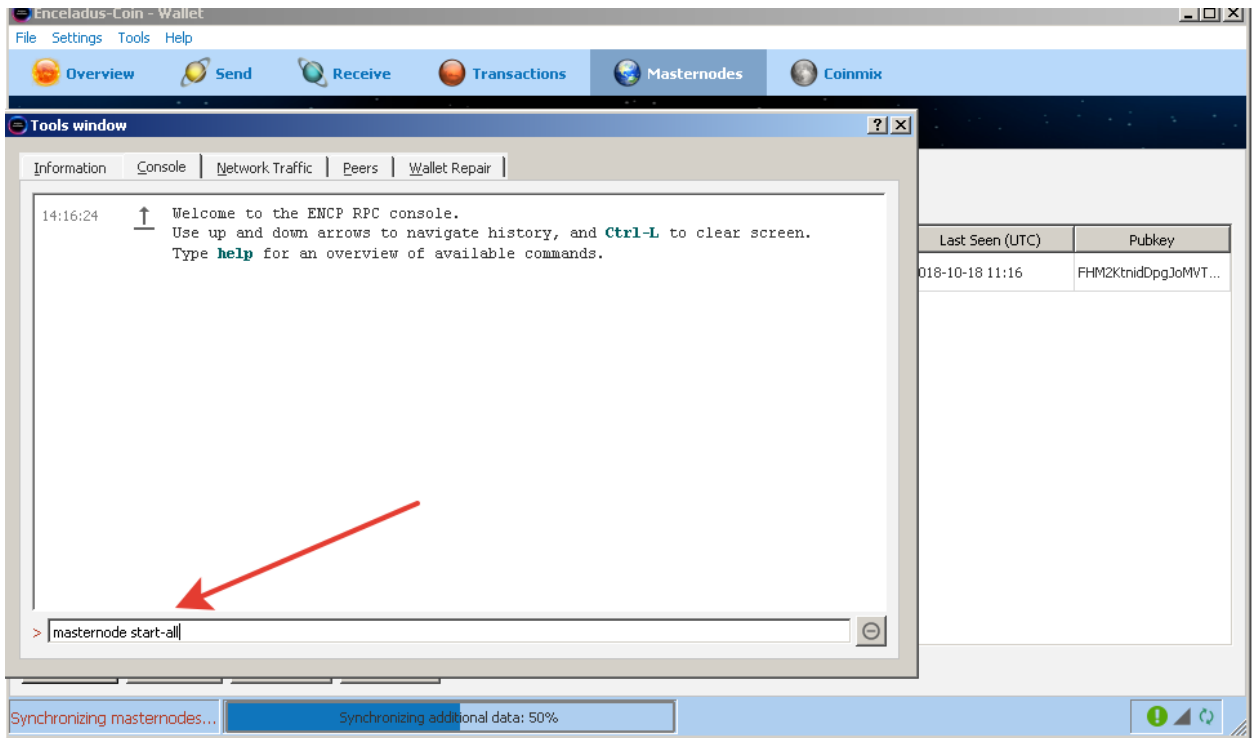
masternodeprivkey=YOUR_PRIV_KEY

masternodeaddr=YOUR_VPS_IP:15820

Go back to control wallet.

Restart it and go to debug console.

In debug console run command "masternode start-all"



Enjoy!